

Robtex

220LC-9S

Long Reach Excavator

| | |
|----------------------------|---|
| Engine | HYUNDAI HM 5.9 |
| Operating weight | 24,360 kg (53,700 lb) |
| Bucket capacity (SAE) | 0.52 m ³ (0.68 yd ³) |
| Max. reach on ground level | 15,120 mm (49' 7") |
| Digging depth | 11,760 mm (38' 7") |
| Travel speed | 3.4 to 5.9 km/hr (2.1 to 3.7 mph) |

Long Reach Front Includes:

Boom, Arm, Linkage, Bucket, Cylinders (boom, arm, and bucket), Hydraulic lines, and Additional counterweight for stability.

Designed especially for river maintenance and settling pond rehabilitation in plants.

The extended range front attachments give all the advantages of a hydraulic excavator plus an exceptional long reach range.

Relief Valve Setting

| | |
|---------------------------------|-------------------------|
| Implement circuits | 350 kgf/cm ² |
| Travel | 350 kgf/cm ² |
| Power boost (boom, arm, bucket) | 380 kgf/cm ² |
| Swing circuit | 265 kgf/cm ² |
| Pilot circuit | 40 kgf/cm ² |
| Travel speed | Installed |

Hydraulic cylinders

| | |
|-----------------|----------------------------|
| No. of cylinder | Boom: 2 - 120 X 1,290 mm |
| bore X stroke | Arm: 1 - 140 X 1,510 mm |
| | Bucket: 1 - 120 X 1,055 mm |

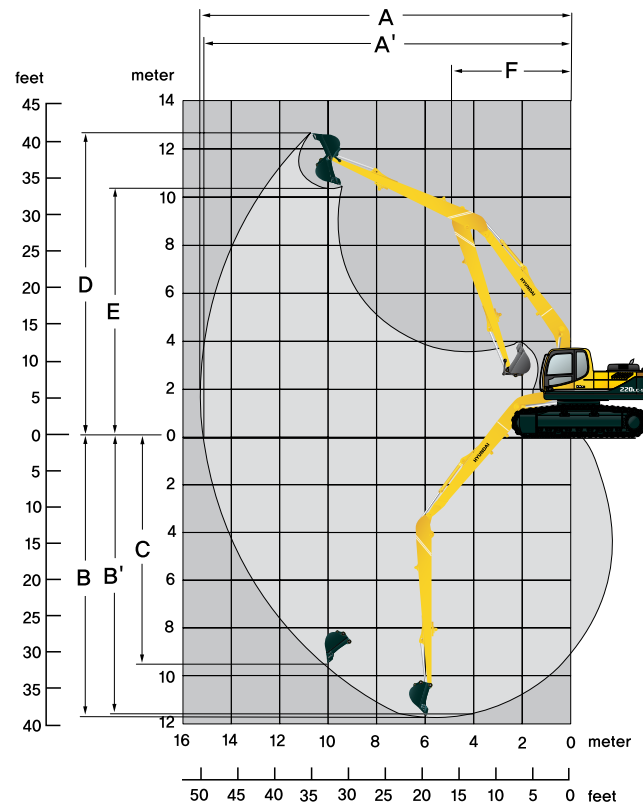
Digging force

| | |
|----------------------|--|
| Bucket digging force | (SAE) 7,400 kgf [72.6 kN] (16,310 lbf) (ISO) 8,500 kgf [83.4 kN] (18,740 lbf) |
| Arm crowd force | (SAE) 5,000 kgf [49.0 kN] (11,020 lbf) (ISO) 5,100 kgf [50.0 kN] (11,240 lbf) |

MOVING YOU FURTHER

Working ranges

| | |
|------------------------------------|--------------------|
| Boom length | 8,200 mm (26' 11") |
| Arm length | 6,300 mm (20' 8") |
| A Max. digging reach | 15,220 mm (50' 0") |
| A' Max. digging reach on ground | 15,120 mm (49' 7") |
| B Max. digging depth | 11,760 mm (38' 7") |
| B' BMax. digging depth (8' level) | 11,650 mm (38' 3") |
| C Max. vertical wall digging depth | 9,610 mm (31' 6") |
| D Max. digging height | 12,550 mm (41' 2") |
| E Max. dumping height | 10,280 mm (33' 9") |
| F Min. swing radius | 4,870 mm (16' 0") |



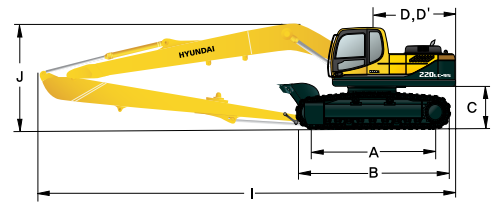
Operating weight (approximate)

Operating weight, including 8,200mm (26' 11") Boom, 6,300mm (20' 8") Arm, SAE heaped 0.51m³ (0.67yd³) backhoe bucket, and 800 mm (32") triple grouser shoe, additional counterweight lubricant, coolant, and full fuel tank, Hyd. tank and the standard equipment.

| | |
|-----------------------|-------------------------------------|
| Upperstructure weight | 9,400 kg (20,720 lb) |
| Counterweight | 5,300 kg (11,680 lb) |
| Attachment | 4,600 kg (10,140 lb) |
| Operating weight | 24,360 kg (53,700 lb) |
| Drawbar pull | 21,100 kgf (46,500 lb) |
| Ground pressure | 0.42 kgf/cm ² (5.97 psi) |

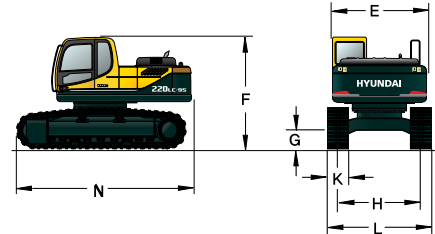
Shipping dimensions

| | |
|--|--------------------|
| A Tumbler distance | 3,650 mm (12' 0") |
| B Overall length of crawler | 4,440 mm (14' 7") |
| C Ground clearance of counterweight | 1,060 mm (3' 6") |
| D Tail swing radius | 2,830 mm (9' 3") |
| D' Rear-end length | 2,770 mm (9' 1") |
| I Overall length | 12,030 mm (39' 6") |
| J Overall height of boom | 3,280 mm (10' 9") |



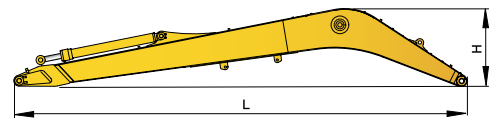
Base machine

| | |
|--|-----------------------|
| E Overall width of upperstructure | 2,740 mm (9' 0") |
| F Overall height of cab | 2,920 mm (9' 7") |
| G Min. ground clearance | 480 mm (1' 7") |
| H Track gauge | 2,390 mm (7' 10") |
| K Track shoe width | 800 mm (32") |
| L Overall width | 3,190 mm (10' 6") |
| N Overall length | 4,990 mm (16' 4") |
| Weight | 18,380 kg (40,520 lb) |



Long reach boom

| | |
|-------------------------|---------------------|
| L Overall length | 8,395 mm (27' 7") |
| H Overall height | 1,515 mm (5' 0") |
| W Overall width | 800 mm (2' 7") |
| Weight | 2,470 kg (5,450 lb) |



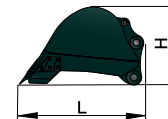
Long reach arm

| | |
|-------------------------|---------------------|
| L Overall length | 7,280 mm (23' 11") |
| H Overall height | 835 mm (2' 9") |
| W Overall width | 480 mm (1' 7") |
| Weight | 1,340 kg (2,950 lb) |



Bucket

| | |
|-------------------------|-------------------|
| L Overall length | 1,600 mm (5' 3") |
| H Overall height | 980 mm (3' 3") |
| W Overall width | 820 mm (2' 8") |
| Weight | 465 kg (1,030 lb) |



Rating over-front Rating over-side or 360 degree

R220LC-9S LIFTING CAPACITY

Boom: 8.2 m (26' 11") / Arm: 6.3 m (20' 8") / Bucket: 0.52 m³ (0.68 yd³) SAE heaped / Shoe: 800 mm (32") triple grouser

| Load point height m (ft) | | Load radius | | | | | | | | At max. reach | | |
|-----------------------------|----|---------------|--------|---------------|-------|-------------|-------|--------------|-------|---------------|-------|-----------------|
| | | 3.0 m (10 ft) | | 6.0 m (20 ft) | | 9.0m (30ft) | | 12.0m (40ft) | | Capacity | | Reach m (ft) |
| | | | | | | | | | | | | |
| 9.0 m (30 ft) | kg | | | | | | | *830 | *830 | *1330 | *1330 | 13.11 (43.0) |
| | lb | | | | | | | *1830 | *1830 | *2930 | *2930 | |
| 6.0 m (20 ft) | kg | | | | | | | *1430 | *1430 | *1410 | 1160 | 14.37 (47.1) |
| | lb | | | | | | | *3150 | *3150 | *3110 | 2560 | |
| 3.0 m (10 ft) | kg | | | | | *1990 | *1990 | *1670 | 1630 | *1520 | 980 | 14.89 (48.9) |
| | lb | | | | | *4390 | *4390 | *3680 | 3590 | *3350 | 2160 | |
| Ground Line | kg | *4560 | *4560 | *4330 | *4330 | *2650 | 2430 | *1980 | 1440 | *1670 | 930 | 14.75 (48.4) |
| | lb | *10050 | *10050 | *9550 | *9550 | *5840 | 5360 | *4370 | 3170 | *3680 | 2050 | |
| -3.0 m (-10 ft) | kg | *5710 | *5710 | *5250 | 3920 | *3150 | 2140 | *2220 | 1310 | *1860 | 1020 | 13.92 (45.7) |
| | lb | *12590 | *12590 | *11570 | 8640 | *6940 | 4720 | *4890 | 2890 | *4100 | 2250 | |
| -6.0 m (-20 ft) | kg | *7790 | *7790 | *5370 | 3840 | *3280 | 2060 | | | *2090 | 1330 | 12.25 (40.2) |
| | lb | *17170 | *17170 | *11840 | 8470 | *7230 | 4540 | | | *4610 | 2930 | |
| -9.0 m (-30 ft) | kg | *8780 | *8780 | *4510 | 4110 | *2620 | 2260 | | | | | |
| | lb | *19360 | *19360 | *9940 | 9060 | *5780 | 4980 | | | | | |

1. Lifting capacity are based on SAE J1097 and ISO 10567.

2. Lifting capacity of the ROBEX series does not exceed 75% of tipping load with the machine on firm, level ground or 87% of full hydraulic capacity.

3. The load point is a hook located on the back of the bucket.

4. (*) indicates load limited by hydraulic capacity.